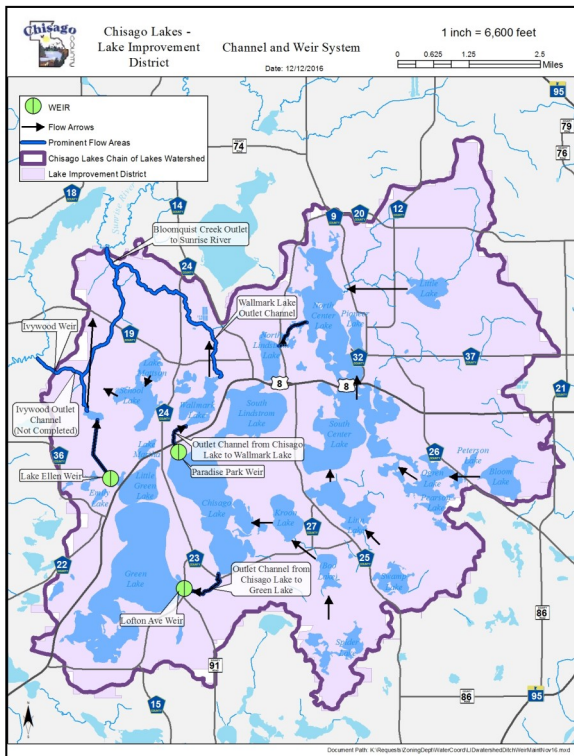


CHISAGO LAKES LAKE IMPROVEMENT DISTRICT CHANNEL AND WEIR OPERATION—HIGH WATER



and operating rules for continued operation of the system. The system is operational during times of high water.

The principle outlet of the system is located at Lake Ellen. The outlet at Lake Ellen and the outlet from Chisago to Green Lakes are controlled by weirs that are opened only during times of high water. A secondary outlet from Chisago to Wallmark Lake is controlled by a stationary weir.

The Lake Ellen Weir was opened and operational during the entire open water season due to high water levels on Green, Little Green and Ellen Lakes.



The Lofton Weir was operational from mid-April through early July due to high water levels on Chisago, North & South Lindstrom Lakes. During early summer, water flowed over the Paradise Park Weir. Until this year, because of lower water levels, the Lofton Weir had not been operational for about 15 previous years.

The Chisago Lakes channel and weir system was established in 1987 to provide an outlet during times of high water.

The Chisago Lakes Lake Improvement District (LID) is responsible for maintaining the channels and weirs. The system is inspected for functionality on a regular basis and necessary repairs are made.

The approved 2016 Channel & Weir Operations & Maintenance Plan describes the critical infrastructure, maintenance requirements,

Partners:

- Chisago Lakes LID
- Green Lake Association
- Chisago-Lindstrom Lakes Association
- Emmons & Olivier Resources, Inc. (EOR)

Status:

Routine inspections and maintenance performed on system.

Overall the system is well maintained and functioning properly.

Lower Left: Volunteer Bruce Meyer, and EOR Engineer Greg Grasko operate the Lake Ellen Weir control gate.



LAKE IMPROVEMENT DISTRICT